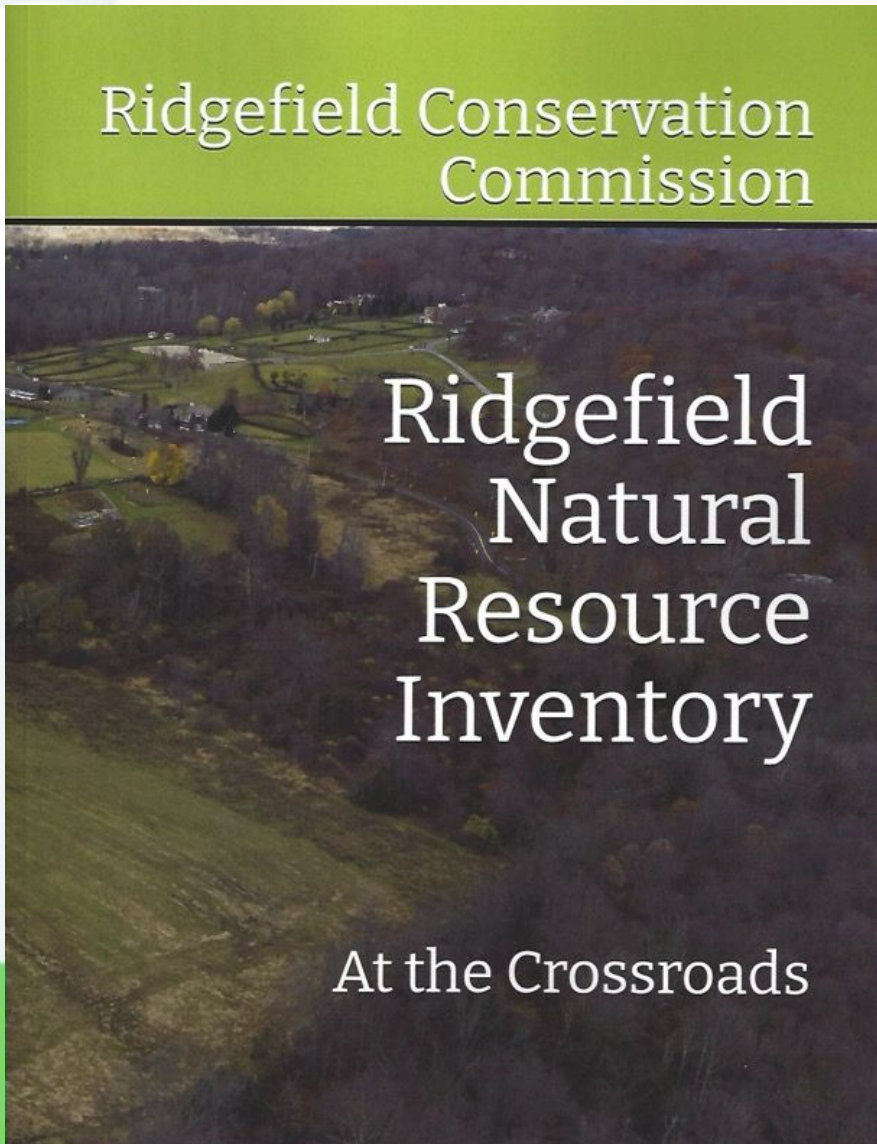


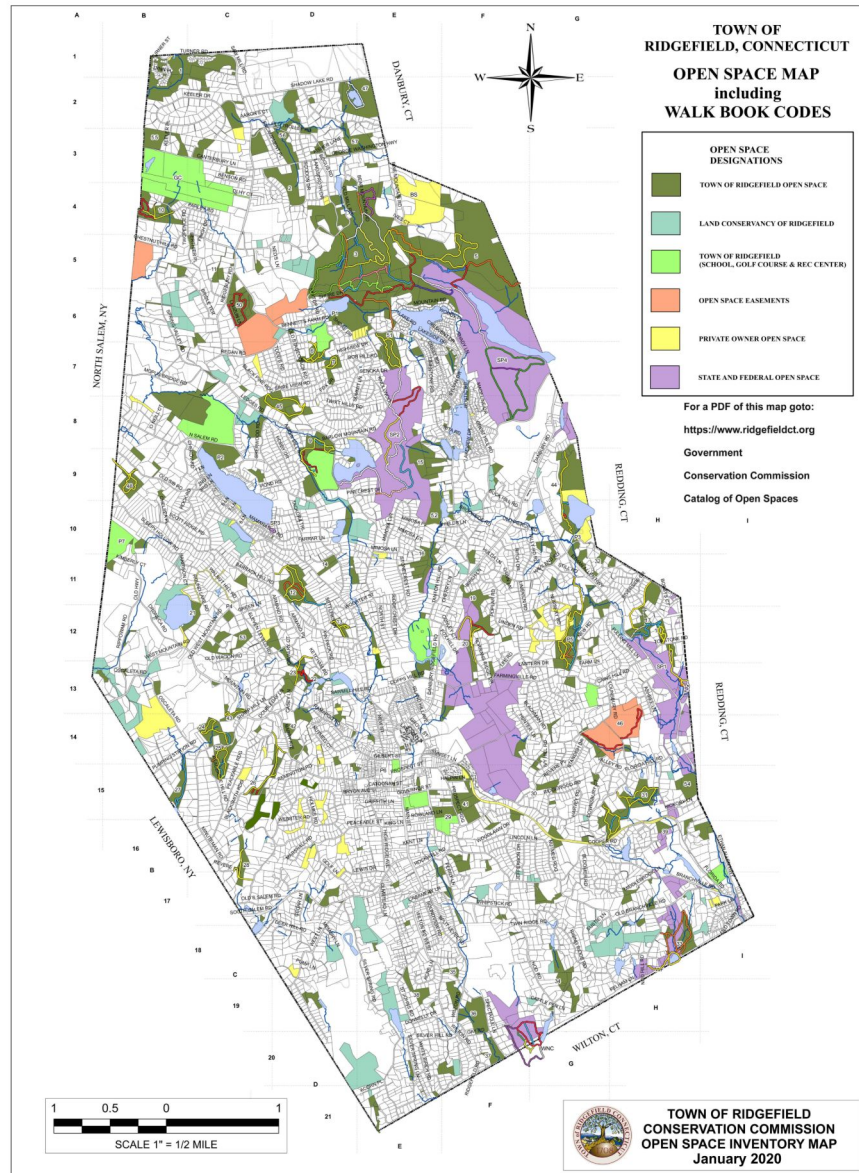
# Natural Resource Inventories



## Tips and traps

Erik Keller,  
Vice-Chairman,  
Ridgefield  
Conservation  
Commission

# Ridgefield



- 25,000 residents
- 22,400 acres land
- 5,700 acres open space

# Ridgefield's NRI Update

- 18 months in the making
- 120 pages covering most natural resources
- Free on-line, available from local bookstore
- Delivers 10 key action items/recommendations to protect land, water, animals





# Budget/Plan

**How long is  
this really  
going to  
take!?**

**Time**



**People**

**Maps/Graphics - \$8,500  
Storyboard - \$1,875  
Publishing - \$1,500  
Drone - \$2,500  
Mileage - \$600  
Total - \$15,000**

**Prior NRI costs were over \$60K**

**Money**



**Focus**



# Data collection



**Commissioners**



**Community Scientists**



**External organizations**



**Shameless Reuse**





# Delivery



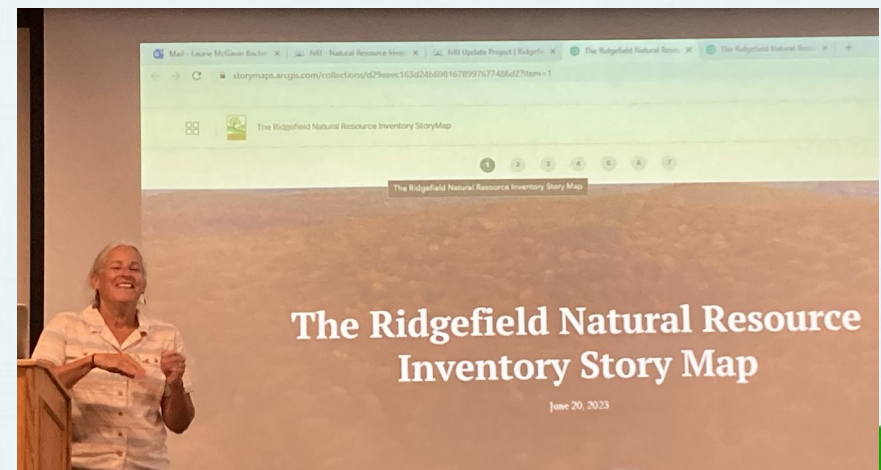
**Graphics**



**Writing/Editing**



**Publication**



**Promotion**

# NRI Recommendations

**Buy Land!**

**Buy Land!**

**Buy Land!**

**Buy Land!**

**Buy Land!**

**Buy Land!**

**Buy Land!**

**KISS and Repeat Findings**



**Have a Champion**



**Never Waste a Good Crisis**

**Monitor**

**Reduce**

**Protect**

**Implement**

**Educate**

**Create Tasks, Active Verbs**



# Lessons Learned

- Never Assume, Mistakes are Everywhere
- Manage Scope
- Draft Many Supporters/Volunteers
- Have Budget

Thank you  
Erik Keller, Vice-Chairman,  
Ridgefield Conservation Commission

[torccvchair@ridgefieldct.gov](mailto:torccvchair@ridgefieldct.gov)

Ridgefield NRI on-line at <https://www.ridgefieldconservation.org/natural-resource-inventory-nri>

